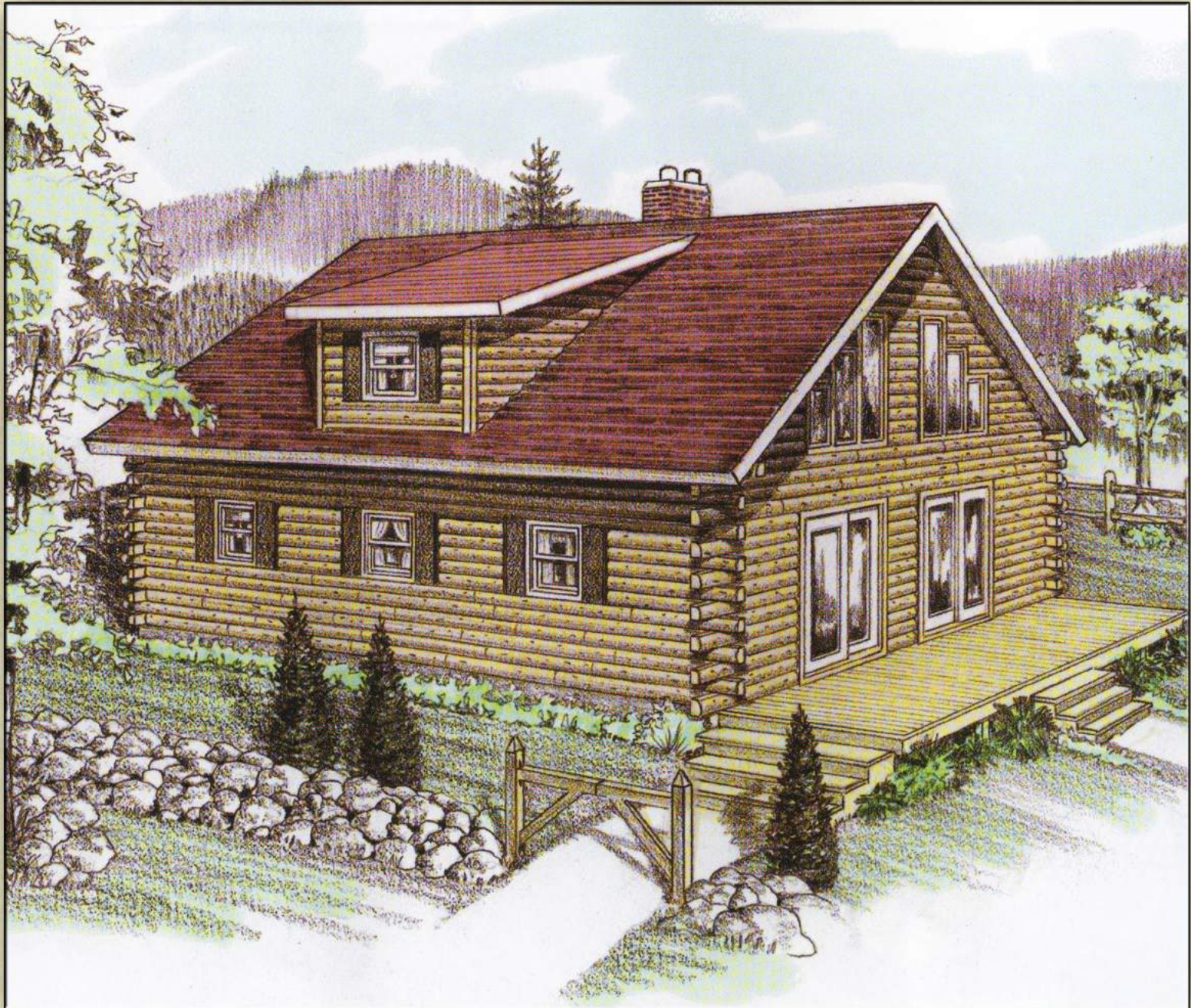




The Spaulding



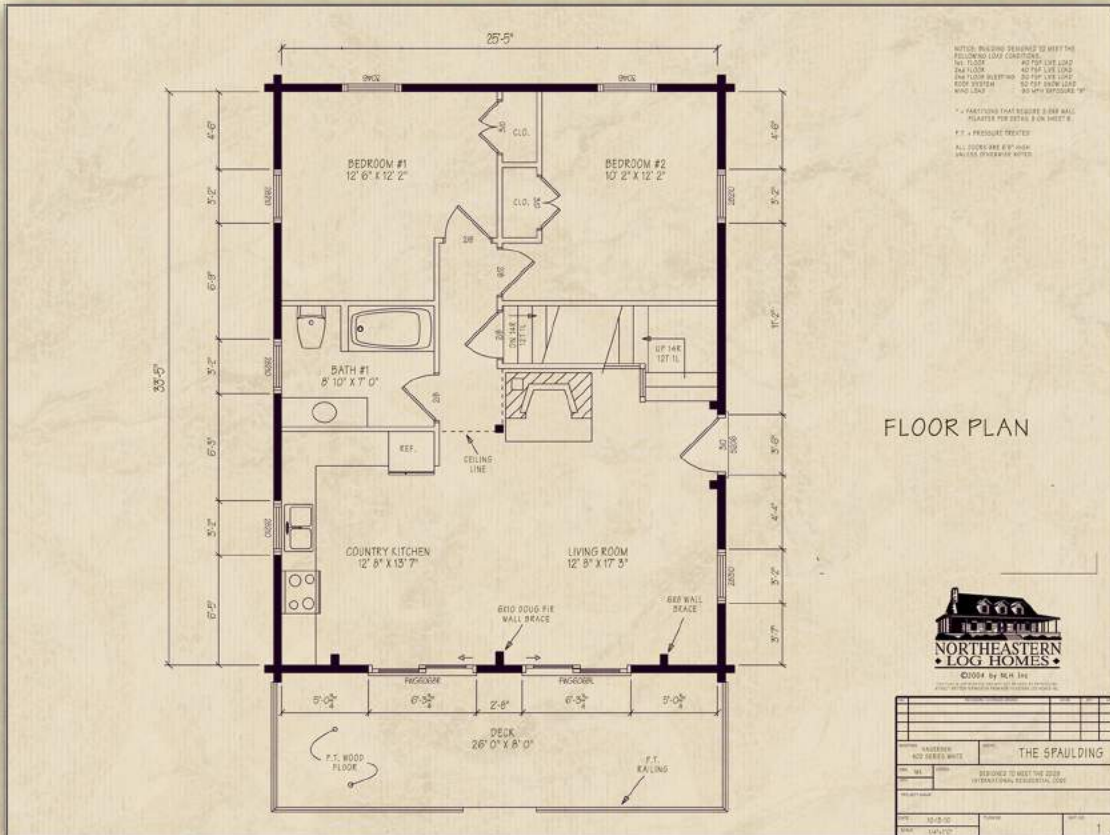
Traditional Home Series--The Spaulding

Northeastern Log Homes
info@northeasternlog.com 800-624-2797 www.northeasternlog.com

*Artist's rendering, photography and optional design ideas may vary from the standard model. Please always consult the standard floorplan and refer to the Traditional Home Series material list as to what is included.



The Spaulding



Traditional Home Series

 26' x 34' Size

1,261 Square Feet

Three Bedrooms

Two Full Baths

The Spaulding has a full cathedral ceiling on the entire second floor and open to below area via rafters & ridge beam with knotty pine v-match included below. The 1st to 2nd floor area is done via regular framing with knotty pine v-match optional for the 1st floor ceiling. See material list for full details.

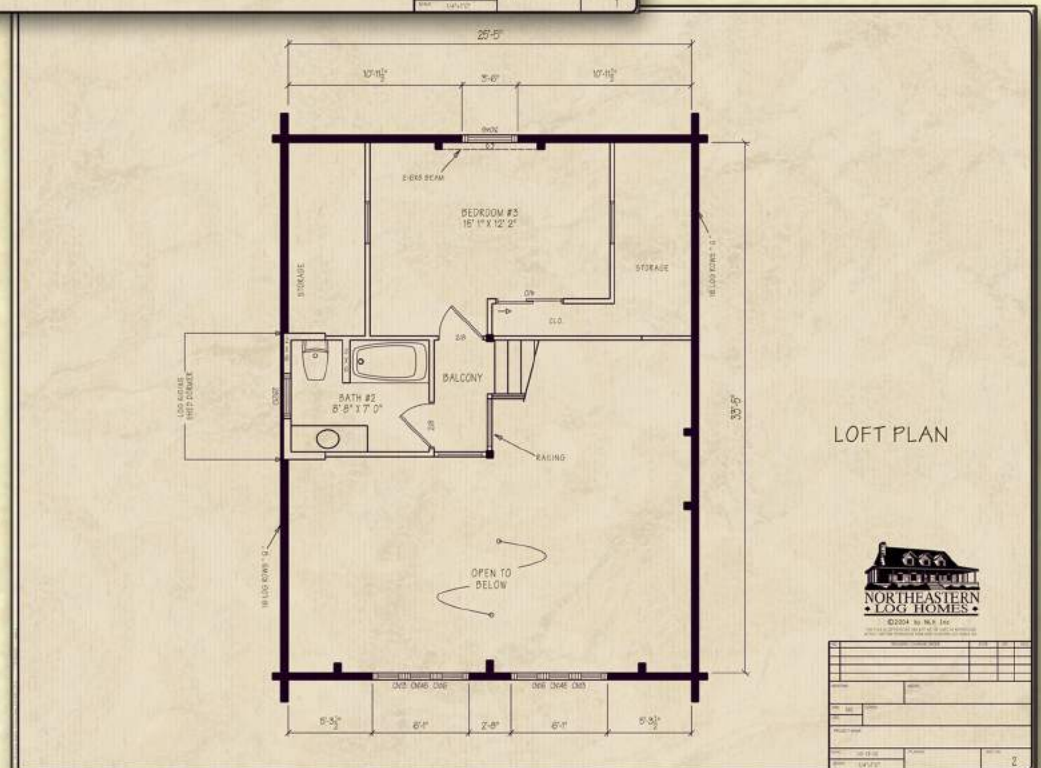
Optional Design Ideas

Extend the dormer across the second floor and add windows to enlarge the upstairs bedroom area

Slightly extend the deck around either the left or right side to give a panoramic view of your scenery

If extending the deck around the right side, change the frenchwood gliders to majestic windows for endless options on furniture placement

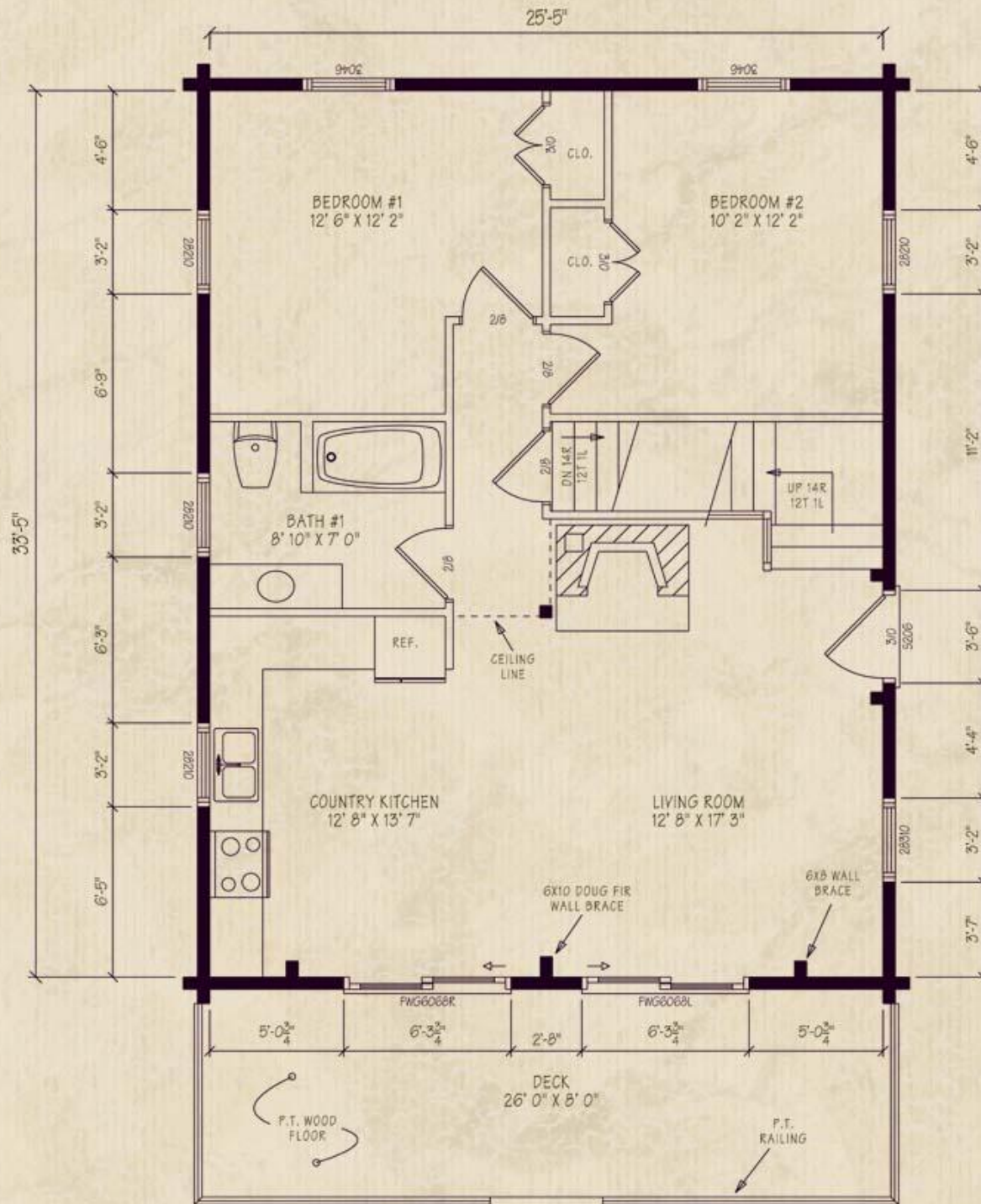
Add a small gable porch to the right side entrance to protect against the elements



Northeastern Log Homes

info@northeasternlog.com 800-624-2797 www.northeasternlog.com

*Artist's rendering, photography and optional design ideas may vary from the standard model. Please always consult the standard floorplan and refer to the Traditional Home Series material list as to what is included.



NOTICE: BUILDING DESIGNED TO MEET THE FOLLOWING LOAD CONDITIONS:
 1st FLOOR 40 PSF LIVE LOAD
 2nd FLOOR 40 PSF LIVE LOAD
 2nd FLOOR SLEEPING 30 PSF LIVE LOAD
 ROOF SYSTEM 50 PSF SNOW LOAD
 WIND LOAD 80 MPH EXPOSURE 'B'

* = PARTITIONS THAT REQUIRE 3/8" WALL PILASTER PER DETAIL 5 ON SHEET D.

P.T. = PRESSURE TREATED

ALL DOORS ARE 6'8" HIGH UNLESS OTHERWISE NOTED.

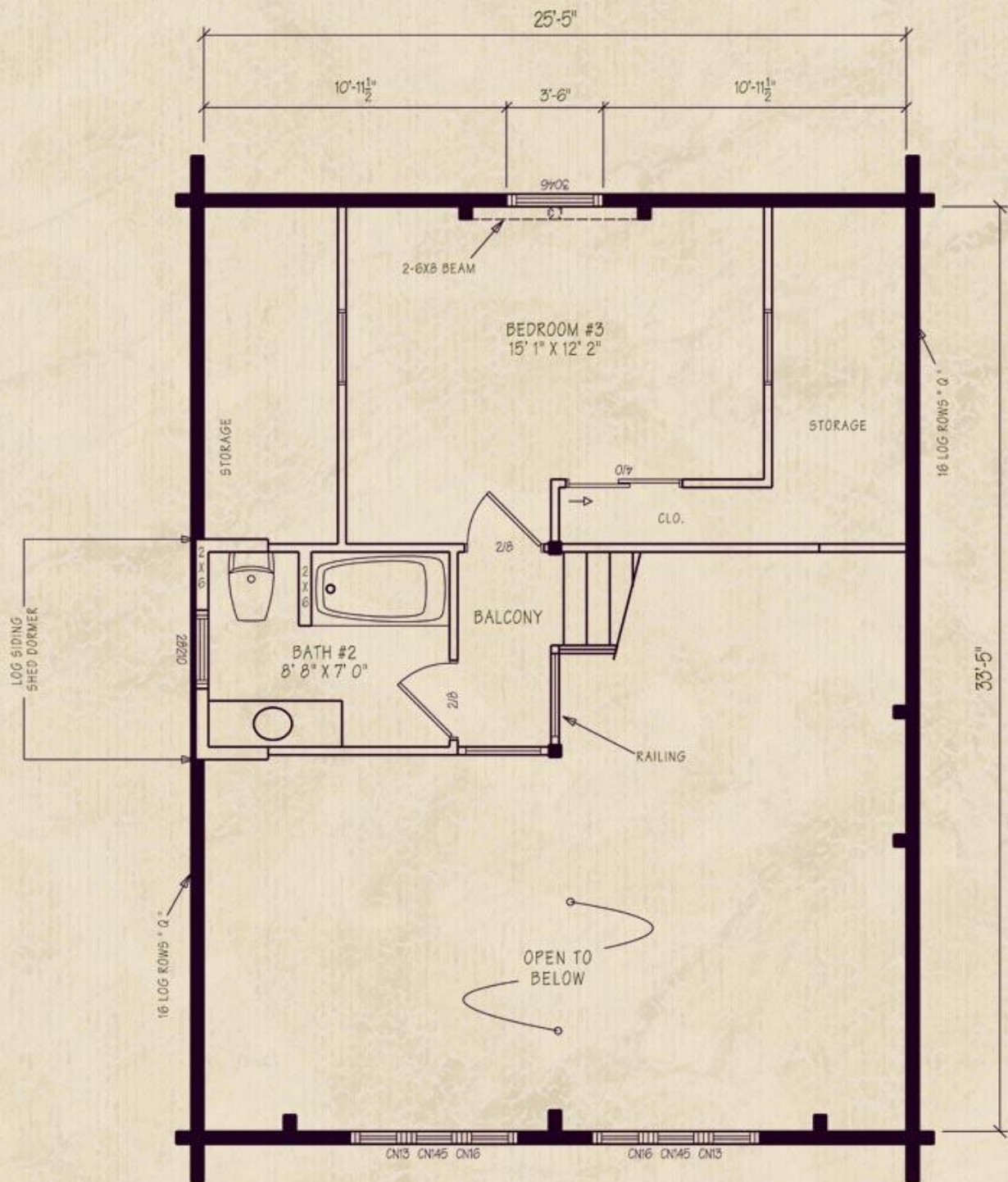


©2004 by NLH Inc

THIS PLAN IS COPYRIGHTED AND MAY NOT BE USED OR REPRODUCED WITHOUT WRITTEN PERMISSION FROM NORTHEASTERN LOG HOMES, INC.

REVISION / CHANGE ORDER		DATE	BY
WINDOW	ANDERSEN 400 SERIES WHITE	MODEL	THE SPAULDING
WALL		DESIGNED TO MEET THE 2003 INTERNATIONAL RESIDENTIAL CODE	
PROJECT NAME			
DATE	10-15-00	PLANNING	SHEET NO. 1
SCALE	1/4" = 1'-0"		

FLOOR PLAN



LOFT PLAN



©2004 by NLH Inc
THIS PLAN IS COPYRIGHTED AND MAY NOT BE USED OR REPRODUCED WITHOUT WRITTEN PERMISSION FROM NORTHEASTERN LOG HOMES, INC.

PERSON TO MAKE ORDER		DATE	BY	CHECK
REVISIONS	MODEL			
CPL. NO.	MODEL			
CPL. NO.				
PROJECT NAME				
DATE	PLANNING		SHEET NO.	
SCALE			2	